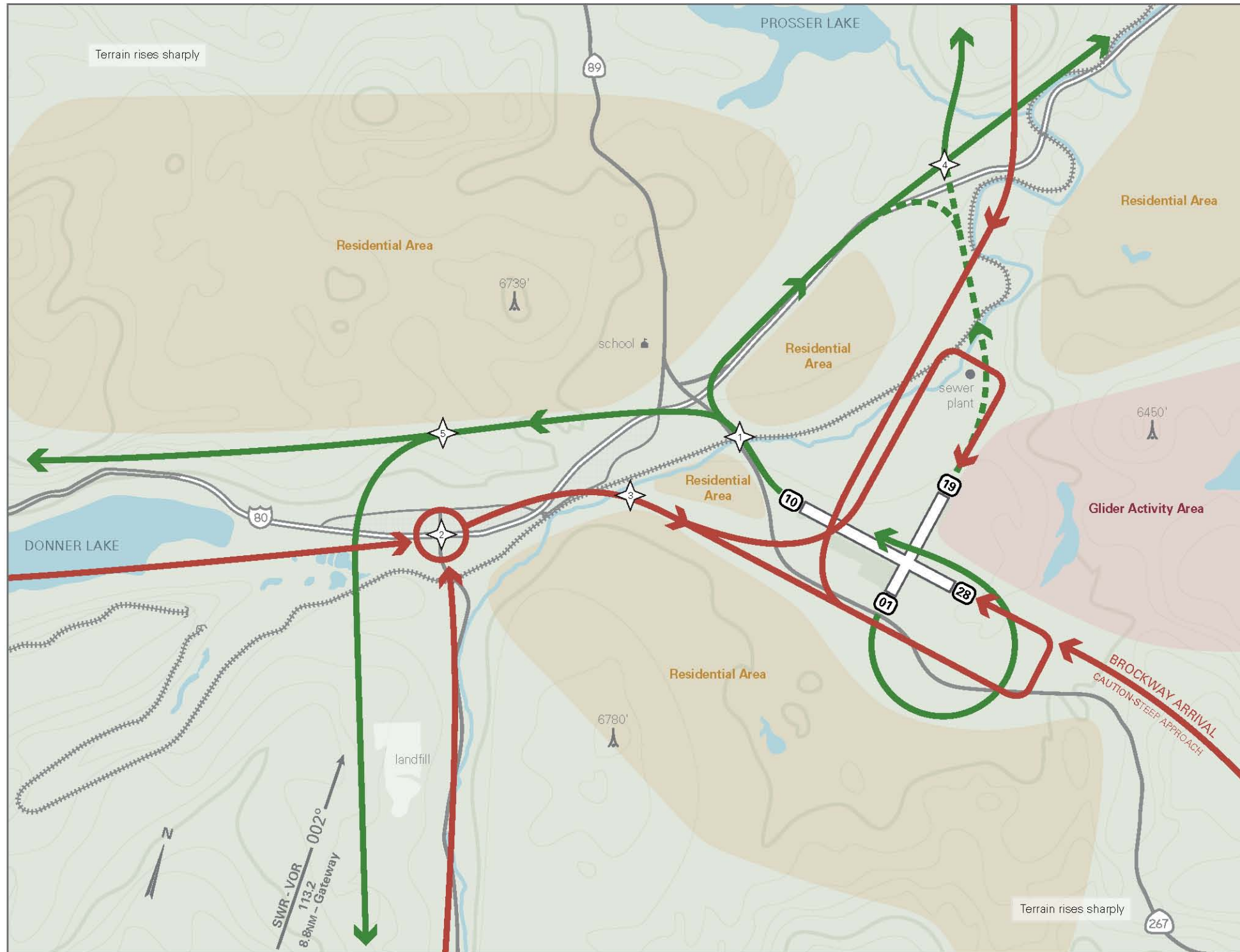


PLEASE AVOID FLIGHT OVER RESIDENTIAL AREAS CONSISTENT WITH SAFE OPERATIONS



TRUCKEE TAHOE AIRPORT

RECOMMENDED VFR OPERATIONAL NOISE PROCEDURES

TRK

Latitude N39°19'22"
 Longitude W120°8'40"
 Field Elevation 5900 MSL

AWOS-3 118.0 (530) 587-4599
 UNICOM 122.80
 Pilot controlled lighting 122.80
 FSS Reno 122.25
Radar Traffic Advisory and Clearances:
 Oakland Center 127.95

GPS WAYPOINTS

- 1 Bypass Bridge N39°19.995 W120°09.779
- 2 Gateway Roundabout N39°19.415 W120°12.462
- 3 Rwy 28 Downwind N39°19.588 W120°10.622
- 4 Scales I-80 Truck Inspection Sta. N39°21.42N W120°08W
- 5 Gateway Out Coyote Moon Golf Course N39°19.774 W120°13.010

LEGEND

- Arrival Routes
- Departure Routes
- Alternate Departure Routes
- Residential Area
- Glider Activity Area
- Water feature
- Interstate
- Roads
- Railroad

NOT TO SCALE
 NOT TO BE USED FOR NAVIGATION

SAFETY FIRST, QUIETLY AS POSSIBLE

www.TruckeeTahoeAirport.com

THE TRUCKEE TAHOE AREA IS NOISE SENSITIVE

REVISED 05/01/08

TTAD NAP map: Version 10

RECOMMENDED VFR NOISE RELATED PROCEDURES

The Truckee Tahoe Airport District and the citizens of the Truckee Tahoe community welcome you to our area. In order to be a good neighbor, the Airport and the community request that you follow these recommended noise abatement procedures, subject to weather, equipment and pilot capabilities. Please do not fly over residential areas and follow recommended arrival and departure flight paths shown on map.

- *West Arrival, please reduce engine RPM by Gateway Checkpoint if possible. Lower RPM reduces aircraft noise substantially.*
- *Departures: When conditions allow, use runways 10 or 01 for departure. Turbine aircraft use NBAA Standard Departure or manufacturers recommendations.*

FOR OPERATIONAL PROCEDURES SEE REVERSE

AS ALWAYS, FLIGHT SAFETY MUST SUPERSEDE NOISE MITIGATION PROCEDURES.

ARRIVALS

Runway 28 & 19 Arrivals from West & South – “Gateway Arrival”

From the Gateway checkpoint, join Highway 267 for a left downwind for Runway 28 or to enter a right downwind for Runway 19.

(Stay over Highway 267. No 45° entry Rwy 28)

Runway 28 Arrival from North

From Scales waypoint enter a midfield crosswind to left traffic for runway 28 OR join a right base for runway 19.

DEPARTURES

Runway 28 Departure – “Bypass Bridge Departure”

At the end of Runway 28, turn to 300° for .8 nm to the Highway 267 bypass bridge/railroad track intersection. **Please, no other turns before the RR tracks.** Departures along Interstate 80 corridor preferred.

Runway 19 Departure – “Alternate Left 225”

(Low powered aircraft in high DA conditions)

After departure, turn left to a heading of 300° and then join the “Bypass Departure.” **Be on the lookout for glider tow traffic also using the “Alternate Left 225.”**

Runway 01 Departure

Fly direct to Scales waypoint then on course. West bound traffic follow I-80 corridor.

ALL AIRCRAFT – ALL RUNWAYS

**No arrivals and departures between 11:00 p.m. and 6:00 a.m.
Morning and evening departures please consider using runway 10 or 01.**

All departures please use best angle (Vx) for first 500 feet, then best rate (Vy) to achieve maximum altitude. Intersection departures are prohibited.

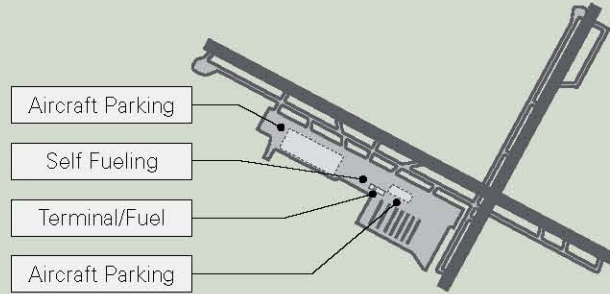
All departures please avoid shallow climbs and gain as much altitude as safely possible before leaving the airport environment.

Arrivals and departures over highways are preferred.

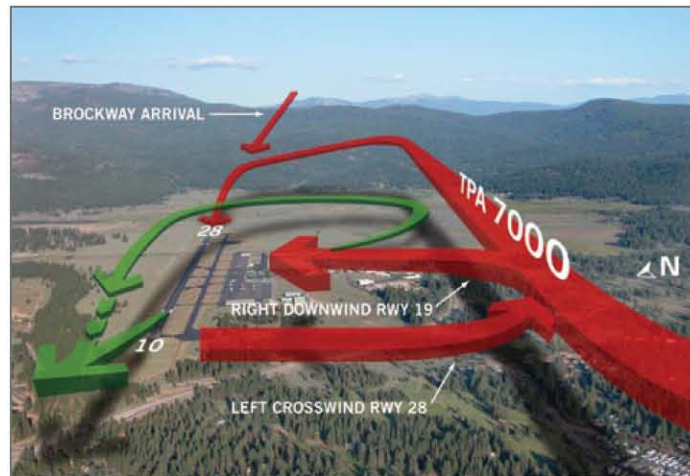
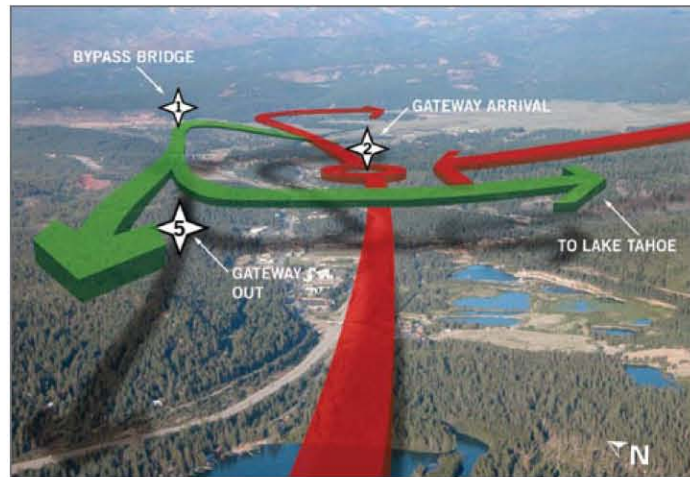
Pattern altitude: 7,000 light aircraft; 7,500 heavy aircraft.

www.TruckeeTahoeAirport.com

TRUCKEE TAHOE AIRPORT



ARRIVAL AND DEPARTURE ROUTES



Visit www.TruckeeTahoeAirport.com for additional traffic pattern images.

TURBULENCE AND DENSITY ALTITUDE WARNING

Mountains surround the Airport. Turbulence, downdrafts and wind shear may be encountered in traffic pattern area. Summer density altitude can exceed 9,000 feet.

NON-TOWERED AIRPORTS

Reminder: During May through October, aircraft towing gliders will often depart Runway 19 and conduct a left 225° turn as depicted on the map. Please remember to give way to the least maneuverable aircraft. When two or more aircraft are approaching an airport for landing, the aircraft at the lower altitude has the right-of-way, but it shall not take advantage of this rule to cut in front of another that is on final approach to land or to overtake the aircraft. **SEE AND BE SEEN. ANNOUNCE YOUR POSITION. USE YOUR RADIO.**

FUEL AND PARKING

Parking: Transient parking is on the ramp. Overnight tie-down fees apply. There are limited transient hangars available on first-come-first-serve basis. **APU 15 minute limit.**

Fuel: Chevron 100LL & Chevron Jet-A available during service hours, 7 a.m. to 7 p.m.

AIRPORT CONTACT INFORMATION

Phone:(530) 587-4119
AWOS:(530) 587-4599
Reno AFSS(800) 992-7433
Web site www.TruckeeTahoeAirport.com

SERVICES

Regent Air(530) 582-1102
 Executive charter, maintenance – piston, turbine and jet and corporate aircraft management
Soar Truckee, Inc.(530) 587-6702
 Sailplane instruction, rental, scenic rides, campgrounds (open May – October)
Todd Aero(530) 587-4465
 Flight instruction, aircraft rental, maintenance, pilot supplies

FOOD, LODGING AND TRANSPORTATION

Food: Runway Café (on field)(530) 582-9351
 Full service deli and catering

Lodging

Best Western-Truckee-Tahoe Inn(530) 587-4525
 Cedar House Sport Hotel(530) 582-5655
 Hampton Inn & Suites(530) 587-1197
 Northstar-at-Tahoe Resort(530) 562-1010
 Truckee Hotel(530) 587-4444

Transportation

Aztec Transportation & Tours(888) 883-2106
 Enterprise(530) 550-1550
 Hertz (on field)(530) 550-9191
 Truckee Trolley(530) 587-7451
 Yellow Cab(530) 587-0600

Visit www.Truckee.com for more information about the vicinity